

THE INSTITUTE OF

# MEASUREMENT AND CONTROL



2025



Companion  
Company  
Scheme

# Contents

<b>3</b> ABOUT THE INSTMC	<b>8</b> PUBLICATIONS
<b>4</b> MEMBERSHIP	<b>9</b> SPECIAL INTEREST GROUPS
<b>5</b> PROFESSIONAL REGISTRATION	<b>10</b> LOCAL SECTIONS
<b>6</b> COMPANION COMPANY SCHEME	<b>11</b> LIST OF CCS MEMBERS



The Institute of Measurement and Control (InstMC) is a Professional Engineering Institute (PEI) and international network of engineers and scientists working within the measurement, automation and control fields. Founded in 1944, the InstMC is recognised by Royal Charter as a learned society and is licensed by the Engineering Council to assess individuals for professional registration.



## We aim to

- Promote high standards of professional competence
- Inform and support our members in their careers
- Collaborate with related organisations
- Provide a bridge between academic research and industrial practice
- Encourage students into engineering and science
- Engage with the wider public
- Inform government policy

## Membership GRADES

TWO MEMBERSHIP CATEGORIES  
ARE AVAILABLE, COMPANY AND  
INDIVIDUAL

### COMPANY

Both companies and universities can join the Companion Company Scheme (CCS). Raise your profile in the instrumentation, control and automation industries with access to 3,000+ professional engineers.

### INDIVIDUAL

Engineers have the following levels of membership available to them

- Student Member
- Associate Member
- Affiliate Member
- Member – MInstMC
- Fellow – FInstMC



Bringing together measurement and control specialists and academics from all over the world to share ideas, expertise and technological developments. As a member of the InstMC gain access to exclusive content, attendance at national and international events, unrivalled peer networking and recognition as a competent and actively engaged engineer.

## PROFESSIONAL REGISTRATION

THE INSTITUTE OF MEASUREMENT AND CONTROL IS LICENSED BY THE ENGINEERING COUNCIL TO ASSESS AND REGISTER INDIVIDUALS AS:

- Chartered Engineer - **CEng**
- Incorporated Engineer - **IEng**
- Engineering Technician - **EngTech**

### Plus access to:

- European Engineer - **Eurlng**
- International Professional Engineer - **IntPE**

## WHY REGISTER AS A PROFESSIONAL ?

- 1 Employers recognise CEng, IEng and EngTech as proof of professional attainment and commitment and can benchmark the competences of their staff against a national standard
- 2 Registration with the Engineering Council ensures national and international recognition of expertise and professional standing in the engineering and science communities





## The InstMC Companion Company Scheme has been running since 1992

enabling companies to raise their profile amongst our membership of 2,000+ professional engineers in the measurement, control and automation sectors. As a member of the scheme there are opportunities to network with other businesses, InstMC accredited universities and with individual members, at local and regional level, through Local Sections and Special Interest Groups.

### PRICE

The CCS membership year runs from 1st January until 31st December with an **annual membership fee of £594**. If you join part way through the year, we will calculate your fee on a pro-rata basis.

- Joining from 1st January to 30th June: 100% of annual price - £614
- Joining from 1st July to 30th October: 50% of annual price - £307
- Joining from 1st November to 31st December: £0 due on current year's subscription but full annual fee of £614 due upfront for the following year.

### How to Join

Visit the InstMC website at:  
[https://www.instmc.org/membership/companion\\_company\\_scheme/default.aspx](https://www.instmc.org/membership/companion_company_scheme/default.aspx)

- Click on the 'Join Now' button to reach the Companion Company Scheme Application form page.
- Complete the online form and submit your application.

Once we have received your submission, we will approve and process your application. An email will be sent to you with a link to make a payment. You will then receive the Welcome Pack and your annual membership will commence.

If you would like to discuss any of these benefits in more detail, please contact Ernest Kyei: [ernest.kyei@instmc.org](mailto:ernest.kyei@instmc.org).

### COMPANION COMPANY SCHEME BENEFITS

- Opportunity to promote networking events and services to the wider membership.
- Introduction to all the InstMC Local Sections with the potential to give technical presentations and sponsor events.
- Opportunity to participate in Special Interest Groups to develop company knowledge.
- 15% discount on advertising in Precision magazine.
- 15% discount on advertising in The InstMC Wire digital monthly newsletter.
- Appear in the regular Precision feature 'CCS Showcase' to highlight your company.
- Use of InstMC logo on your website, stationery and marketing materials.
- Receive a copy of the Institute's quarterly magazine, Precision.
- Opportunity for qualified employees to apply for specialist engineer status; RFSE (Registered Functional Safety Engineer) and RExE (Registered Explosives Atmosphere Engineer).
- Discount on cost of training approval and endorsement.
- Employees can attend InstMC events at the discounted Member's rates.
- 10% Discount on exhibition stands at InstMC events.
- Membership Certificate.

# PUBLICATIONS

# SPECIAL INTEREST GROUPS

## KEEPING YOU INFORMED

**PRECISION**  
Coffee-table style in-house magazine sent to members by post and available online

**COMPANION COMPANY SCHEME (CCS) SHOWCASE**  
The InstMC Companion Company Scheme has been running since 1992, enabling companies to raise their profile amongst our membership of 3,000 professional engineers in the measurement, automation and control sectors.

**ADVERTISING RATES 2025**  
This year's rates are based on a 100% increase in advertising rates. The rates are as follows:  
Full Page: £1,000  
Half Page: £500  
1/3 Page: £275  
1/4 Page: £175  
Inset: £100  
A6 & A5 inserts: £600

**PRECISION MAGAZINE**  
The Institute of Measurement and Control is committed to promoting the professional confidence and standing of engineers and technologists at all levels in the automation, instrumentation, control and related industries.

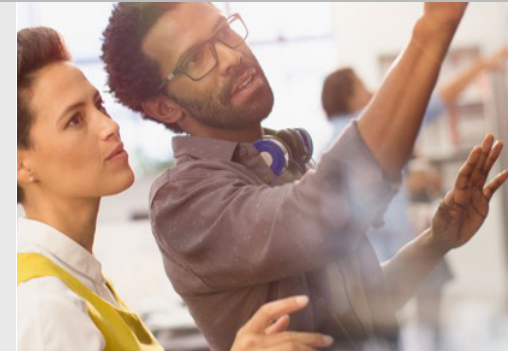
**The InstMC WIRE**

**THE INSTMC WIRE NEWSLETTER**  
Monthly digital newsletter sent to all InstMC members

**WEBSITE**  
Download event presentations from our Technical Resource library. Keep up to date with News. Book your place at an InstMC event. Find out how we can help with your Professional Development [www.instmc.org](http://www.instmc.org)

**InstMC THE INSTITUTE OF MEASUREMENT & CONTROL**

JOIN THE BODY OF PROFESSIONAL ENGINEERS ENGAGED IN MEASUREMENT, CONTROL AND AUTOMATION



InstMC SIGs allow members to share ideas and expertise, collaborate, learn, network and develop company knowledge within the following topic areas.

**Cyber Security** covering all measurement and control industries across four areas of interest: leadership, research & development, infrastructure and skills.

**Digital Transformation** including the Internet of Things (IoT) and Smart Manufacturing revolves around the use of intelligent systems, sensors and actuators to measure and control processes and environments.

**Explosive Atmospheres** is responsible for promoting and understanding Ex matters with focus on a set of associated practices and regulations.

**Flow Measurement** is focused beyond just Oil & Gas recognising that industry and societal needs for flow measurement are wide ranging. Their aim is to drive the future of flow measurement science to meet those needs.

**Functional Safety** is responsible for promoting awareness and understanding of functional safety topics. Their focus is the functional safety related to UK and European Regulations, in particular IEC 61508 and the associated sector specific standards.

**Measurement** provides the essential information required for decision making in process control, manufacturing, and most areas of our lives. The group covers technology transfer, marketing and promotion and best practice in measurement.

**National Metrology Skills Alliance** are working on producing and publishing an industry accepted competency-based framework for metrologists and those working in metrology fields.

**Standards** aims to promote knowledge sharing relating to measurement and control standards, including those relating to smart manufacturing and IoT. InstMC is a nominating body for BS1 standards committees.

## LOCAL SECTIONS

### LOCAL SECTIONS ACROSS THE UK AND OVERSEAS PROVIDE:

- Evening technical lectures
- Seminars and workshops
- Local exhibitions
- Site visits
- Social events
- Networking with professionals from other industries

8 Local Sections in the UK

4 International Local Sections

- Hong Kong
- Ireland
- Malaysia
- Qatar

ABLE INSTRUMENTS & CONTROLS LTD  
AUGHTON AUTOMATION LTD  
AWE  
BEAMEX LIMITED  
BEKA ASSOCIATES LTD  
BELL FLOW SYSTEMS LTD  
BRITISH MEASUREMENT & TESTING ASSOCIATION  
CAPULA  
CHARTER TECH LIMITED  
CODRA SOFTWARE LTD  
CONTROL SYSTEMS SERVICES LTD  
DENCA CONTROLS LTD  
DET-TRONICS  
DMG CONTROL SYSTEMS LTD  
DP-FLOW LTD  
DRAEGER UK LTD  
ELECTRO MECHANICAL INSTALLATIONS  
ENDRESS+HAUSER LTD  
EXLOC INSTRUMENTS UK LTD  
FIRE & GAS DETECTION SOLUTIONS  
FISCAL INSTRUMENTATION LTD  
FLEXIM INSTRUMENTS UK LTD  
FLUIDIC LIMITED  
GPEC LIMITED  
HAMALL PROCESS INSTRUMENTS  
HEMCO POWER & CONTROL SYSTEMS LTD  
HTS ENGINEERING GROUP LTD  
ICSS LTD  
INFLUX MEASUREMENTS LIMITED  
INSTRUMENTS & CONTROLS (HULL)  
ISAGCA - (INTERNATIONAL SOCIETY OF AUTOMATION GLOBAL CYBERSECURITY ALLIANCE)  
ISS PROJECTS (UK) LTD  
KOBOLD INSTRUMENTS LTD  
LABFACILITY LTD  
LFS INDUSTRIAL AUTOMATION  
M J WILSON GROUP  
METHOD SAFETY AND SECURITY LTD  
MOKVELD VALVES UK LTD  
MULTIPLEX ENGINEERING LTD

NIXON FLOWMETERS LTD  
NORTH EAST AUTOMOTIVE ALLIANCE LIMITED  
OBD INSTRUMENTATION LTD  
P & I DESIGN LTD  
PREMTECH LTD  
PROCESS SAFETY SOLUTIONS  
SAMSON CONTROLS LTD  
SELLA CONTROLS  
SHP AUTOMATION LTD  
SILCHESTER CONTROL SYSTEMS  
SWAGELOK SCOTLAND  
TECHNICAL INITIATIVES UK LTD  
THERMAL RESOURCES MANAGEMENT (TRM)  
VALMET LIMITED (FLOW CONTROL)  
VALMET LTD  
VEGA CONTROLS LTD

Institute of Measurement and Control | 297 Euston Road, London NW1 3AD  
Phone: +44 (0)20 7387 4949 | Website: [www.instmc.org](http://www.instmc.org)

